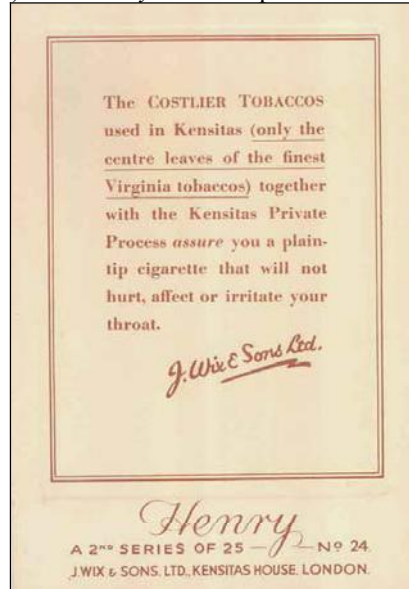
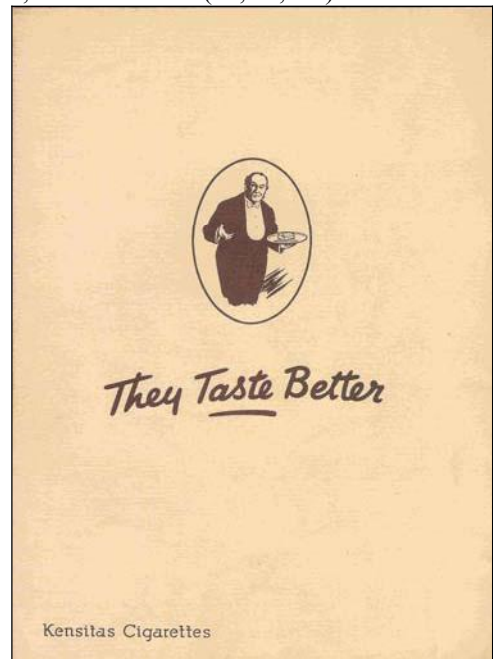
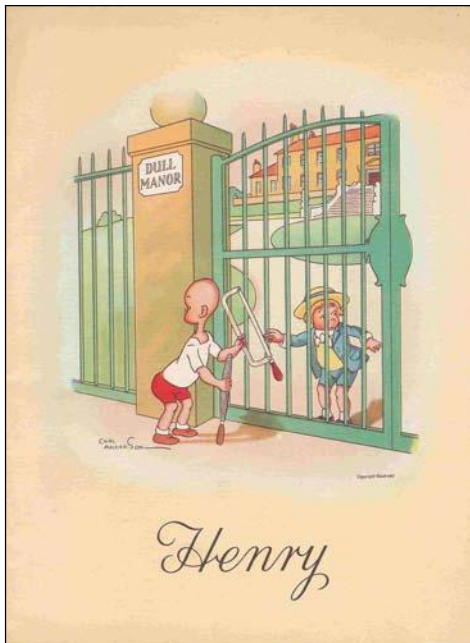


NB see front cover of this Cardlines for sample card (#13 of 25) from *Henry 1<sup>st</sup> series* postcard size issued in 1935.



Wix 1936 *Henry 2<sup>nd</sup> series* (#24 of 25 postcard size – 100 x 145mm; non-adhesive back)

**Henry Albums** for 1<sup>st</sup> & 2<sup>nd</sup> series (large cards) measure 190 x 252 mm; for other series (3<sup>rd</sup>, 4<sup>th</sup>, 5<sup>th</sup>) 230 x 177 mm.



*Henry 1<sup>st</sup> series*, 1935 (above: front & back cover; below: inside cover page & 1<sup>st</sup> page)

**T**HE Manufacturers of Kensitas Cigarettes present "Henry" for your enjoyment, and this album has been prepared with a view to adding to that enjoyment.

Each card in the "Henry" series bears a number, from 1 to 50, but you will see that no corresponding numbers appear in the spaces in which the cards are to be fixed. Instead each space has an adjoining thumb-nail sketch, which is in the nature of a clue to the card for which it is intended.

Considerable entertainment will be found in studying these sketches and speculating as to what the situation will be in the actual picture. If you are a good guesser, let this be a test of your skill—but don't be surprised when "Henry" turns out the winner!

*J. Wix & Sons Ltd.*  
KENSITAS HOUSE, LONDON.

